

Jukes & Co

Estate Agents



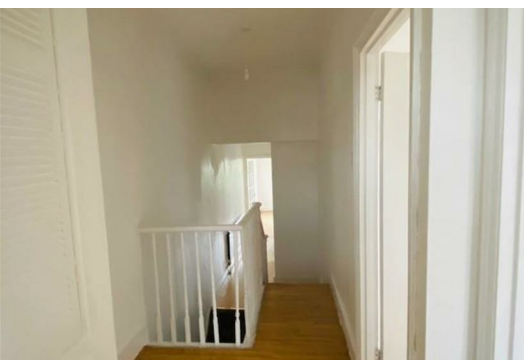
Tennison Road

, London, SE25 5NE

£1,100



A BRIGHT AND SPACIOUS TWO BEDROOM CONVERSION LOCATED WITHIN 10 MINUTES WALK OF NORWOOD JUNCTION STATION AND THE AMENITIES OF SOUTH NORWOOD. THE PROPERTY OFFERS A MODERN KITCHEN WITH WHITE GOODS, 14FT RECEPTION ROOM AND 2 DOUBLE BEDROOMS PLUS A SPACIOUS WHITE BATHROOM. IT IS SITUATED IN A VERY ATTRACTIVE AND WELL MAINTAINED BUILDING.



ENTRANCE HALL 14 x 9'8 (4.27m x 2.95m)

STAIRS UP TO SPACIOUS LANDING, RADIATOR, STORAGE CUPBOARD, LOFT ACCESS

KITCHEN 8'6 (2.59m)

WALL AND BASE UNITS, STAINLESS STEEL SINK UNIT, WASHING MACHINE, ELECTRIC HOB, FRIDGE FREEZER, DOUBLE GLAZED WINDOW

BEDROOM 11'5 x 10'3 (3.48m x 3.12m)

DOUBLE GLAZED WINDOW, LAMINATE FLOOR, RADIATOR

BEDROOM 10'6 x 8'7 (3.20m x 2.62m)

DOUBLE GLAZED WINDOW, LAMINATE FLOOR, RADIATOR

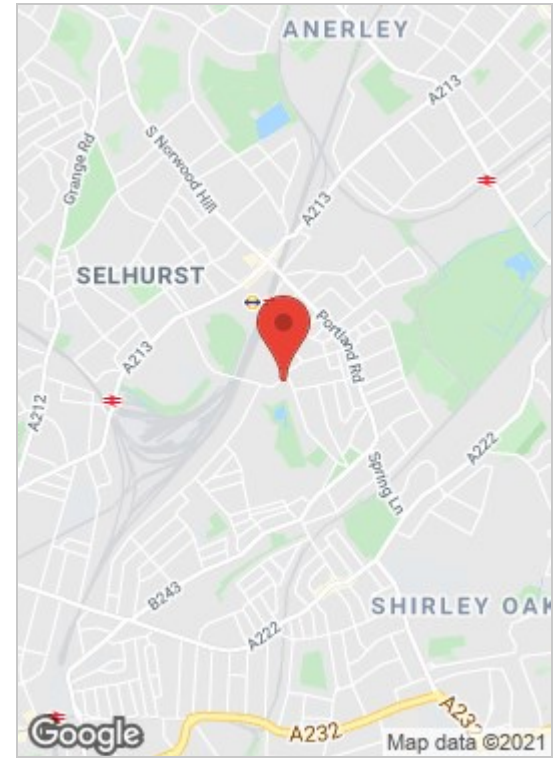
BATHROOM

SPACIOUS BATHROOM COMPRISING WHITE BATH WITH SHOWER OVER, WASH HAND BASIN, W.C., FROSTED DOUBLE GLAZED WINDOW, WHITE TILING

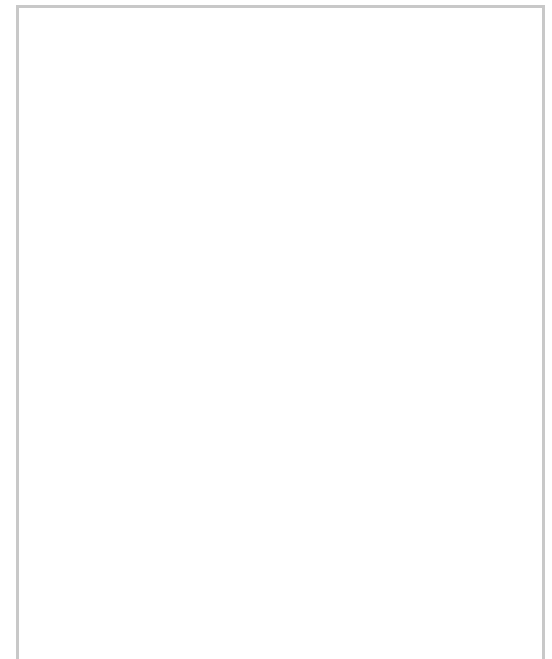
RECEPTION 14' x 9'8 (4.27m x 2.95m)

LARGE BAY DOUBLE GLAZED WINDOW, RADIATOR, LAMINATE FLOOR

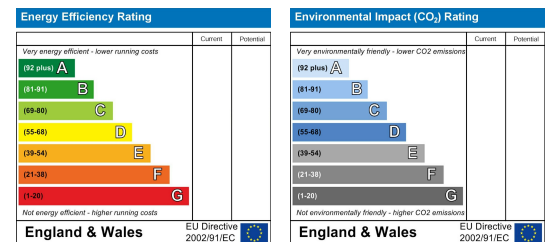
Area Map



Floor Plan



Energy Efficiency Graph



These particulars, whilst believed to be accurate are set out as a general outline only for guidance and do not constitute any part of an offer or contract. Intending purchasers should not rely on them as statements of representation of fact, but must satisfy themselves by inspection or otherwise as to their accuracy. No person in this firms employment has the authority to make or give any representation or warranty in respect of the property.